



4PC. Master Cylinder Adapter Set

OPERATIONS MANUAL



1. FEATURES

2. SPECIFICATIONS

3. WARNINGS!

4. INSTRUCTIONS

5. APPLICATION

6. WARRANTY



NEED HELP?

(206) 453-6776

www.arestool.com

customerservice@arestool.com

Don't forget to register your product!

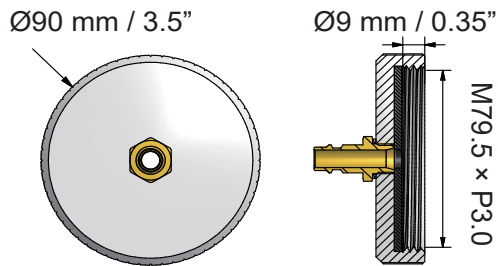
1. FEATURES

- Set for fitting brake master cylinder reservoir to do brake pressure bleeding services
- Includes 3 specific adapters and 1 universal adapter with a fastening chain
- Adapter cap material: Aluminum
- Uses brake fluid resistant EPDM rubber seal
- Wide vehicle fitment
- Suitable for working pressure between 14.5-29 psi / 1-2 bar

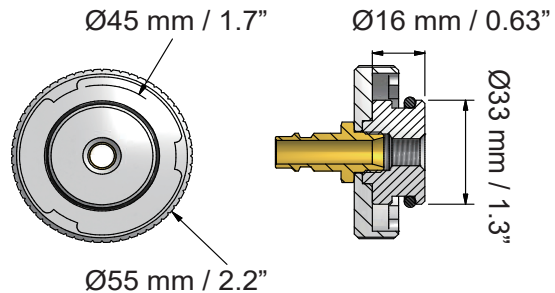
2. SPECIFICATIONS



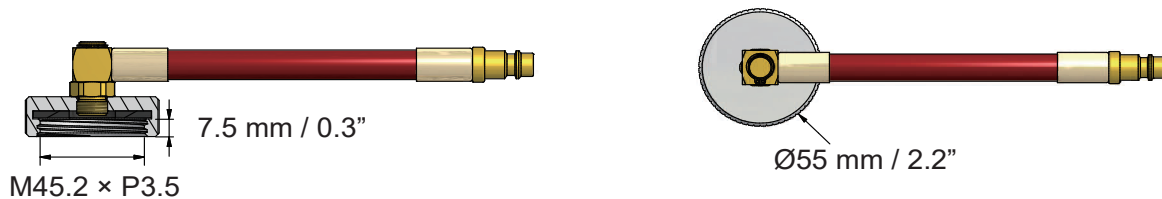
1 M79.5 ADAPTER (ARES 18048)



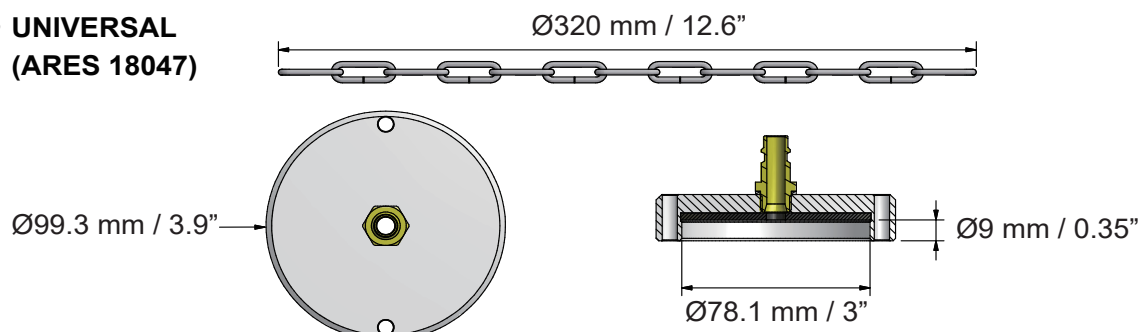
2 M45 ADAPTER (ARES 18049)



3 EUROPEAN THREADED (ARES 18050)



4 UNIVERSAL (ARES 18047)



3. WARNINGS!



CAUTION



- Always read the instructions carefully before using the tool.
- Ensure the working area has adequate lighting.
- Keep children and unauthorized persons away from the working area.
- Clean all dirt from around the cover of the master cylinder before removing.
- DO NOT allow untrained persons to use this tool.
- Always wear eye protection that meets OSHA and ANSI Z87.1 standards.
- Always wear gloves when working with the tool.
- Always wear ear protection.
- Disposal: Customers should follow local regulations to handle used/waste parts.
- Brake fluid is hazardous. Read and follow fluid manufacturer's warnings.
- Brake fluid is corrosive and may damage automobile paint or other surfaces. If fluid spills, flush with water immediately.

4. INSTRUCTIONS

INSTRUCTIONS FOR ① M79.5, ② M45, AND ③ EU TYPE

- 1 Remove the master cylinder reservoir cap from the car, and compare to find the most suitable sized adapter (Fig 1 and 2), and connect to the reservoir filler neck securely (Fig 3).
- 2 Connect the adapter to the brake pressure bleeding tank or machine (not included).
- 3 A low-pressure leak test is recommended to verify if the connection is secure.



INSTRUCTIONS FOR ④ UNIVERSAL TYPE

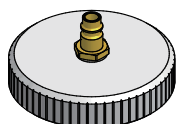
- 1 Place the adapter on the brake reservoir and wind the chain through the master cylinder and hook on the hanger stud (Fig 4).
- 2 Fasten the wing nuts (Fig 5), and make sure the connections are secure (Fig 6).
- 3 Connect the adapter to the brake pressure bleeding tank or machine (not included).
- 4 A low-pressure leak test is recommended to verify if the connection is secure.



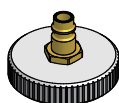
5. APPLICATION

The application below is for reference only. More vehicle applications are possible. Some car models may be applicable with more than one type of adapter due to variations in car body style (e.g. sedan, hatchback, or cabriolet), engine size and capacity (e.g. 1.6L, 1.8L, 2.4L), and the location where the car was manufactured.

1 M79.5
ARES 18048



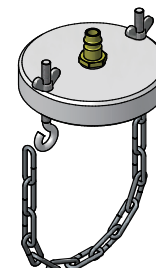
2 M45
ARES 18049



3 EU THREADED
ARES 18050



4 UNIVERSAL
ARES 18047



MAKE	MODELS	YEAR	NO.	ARES MODEL
Alfa Romeo	All models	All years	EU	18050
Audi	All models	All years	EU	18050
BMW	All models	All years	EU	18050
Citroen	All models	All years	EU	18050
Fiat	All models	All years	EU	18050
Ford	C-Max	2010-2020	EU	18050
Ford	EcoSport	2013-2017	EU	18050
Ford	Edge	2007-2015	M45	18049
Ford	Edge	2016-2020	EU	18050
Ford	Escape	2001-2012	M45	18049
Ford	Escort	1995-2001	EU	18050
Ford	Expedition	1997-2020	EU	18050
Ford	Explorer	1995-2020	M45	18049
Ford	F-150	1990-2018	EU	18050
Ford	F59	2011-2017	M45	18049
Ford	Fiesta	1995-2007	EU	18050
Ford	Fiesta	2008-2020	M45	18049
Ford	Flex	2009-2020	M45	18049
Ford	Focus	2004-2020	EU	18050
Ford	Freestar	2004-2007	M45	18049
Ford	Freestyle	2005-2007	M45	18049
Ford	Fusion	2006-2020	M45	18049
Ford	Galaxy	1995-2015	EU	18050
Ford	KA	1996-2020	EU	18050
Ford	Kuga	2008-2020	EU	18050
Ford	Mondeo	2000-2015	EU	18050
Ford	Puma	1997-2001	EU	18050
Ford	Ranger	1990-2011	M45	18049
Ford	Ranger	2011-2020	EU	18050
Ford	S-Max	2006-2020	EU	18050
Ford	Taurus	2000-2019	M45	18049
Ford	Thunderbird	2002-2005	M45	18049
Ford	Transit	2000-2014	EU	18050
Hyundai	Accent	1996-2006	M45	18049
Hyundai	Azera	2011-2016	M45	18049
Hyundai	Elantra	2006-2018	M45	18049

MAKE	MODELS	YEAR	NO.	ARES MODEL
Hyundai	Santa Fe	2000-2020	M45	18049
Hyundai	Sonata	2009-2020	M45	18049
Hyundai	Sonata Hybrid	2011-2018	M45	18049
Hyundai	Tucson	2004-2018	M45	18049
Hyundai	Veloster	2011-2017	M45	18049
Jaguar	All models	All years	EU	18050
Kia	Borrego	2008-2012	M45	18049
Kia	Cadenza	2013-2018	M45	18049
Kia	Forte	2014-2018	M45	18049
Kia	Optima	2011-2020	M45	18049
Kia	Optima Hybrid	2016-2020	M45	18049
Kia	Rio	2012-2017	M45	18049
Kia	Sedona	2001-2005	M45	18049
Kia	Sedona	2015-2018	M45	18049
Kia	Sorento	2006-2018	M45	18049
Kia	Soul	2009-2018	M45	18049
Kia	Sportage	2010-2018	M45	18049
Land Rover	All models	All years	EU	18050
Mazda	3	2004-2013	EU	18050
Mazda	5	2006-2015	EU	18050
Mazda	323	1989-2004	EU	18050
Mazda	626	2000-2002	M45	18049
Mazda	CX-7	2007-2012	EU	18050
Mazda	Millenia	1995-2002	EU	18050
Mazda	MX-5 Miata	2006-2015	EU	18050
Mazda	RX-7	1991-2002	EU	18050
Mazda	Tribute	2001-2004	M45	18049
Mazda	Tribute	2008-2011	M45	18049
Mercedes-Benz	All models	All years	EU	18050
Mini	All models	All years	EU	18050
Mitsubishi	Diamante	1992-1996	M79.5	18048
Mitsubishi	Eclipse	2000-2012	M79.5	18048
Mitsubishi	Eclipse Cross	2018-2020	M45	18049
Mitsubishi	Endeavor	2004-2011	M79.5	18048
Mitsubishi	Galant	1999-2012	M79.5	18048
Mitsubishi	i-MiEV	2012-2017	M45	18049
Mitsubishi	Lancer	2002-2007	M79.5	18048
Mitsubishi	Lancer	2008-2017	M45	18049
Mitsubishi	Mirage	2014-2020	M45	18049
Mitsubishi	Mirage G4	2017-2019	M45	18049
Mitsubishi	Montero	1992-2004	M79.5	18048
Mitsubishi	Montero Sport	2004-2004	M79.5	18048
Mitsubishi	Outlander	2007-2020	M45	18049
Mitsubishi	Outlander Sport	2011-2020	M45	18049
Nissan	350Z	2003-2009	M45	18049
Nissan	370Z	2009-2020	M45	18049
Nissan	Almera	2000-2006	M45	18049
Nissan	Altima	2007-2020	M45	18049
Nissan	Armada	2005-2020	M45	18049
Nissan	Frontier	1998-2020	M45	18049
Nissan	GT-R	2009-2019	M45	18049
Nissan	Maxima	2009-2020	M45	18049

MAKE	MODELS	YEAR	NO.	ARES MODEL
Nissan	Murano	2003-2007	M45	18049
Nissan	Murano	2009-2014	M45	18049
Nissan	Navara	2015-2020	EU	18050
Nissan	NV1500	2012-2019	M45	18049
Nissan	Pathfinder	1996-2020	M45	18049
Nissan	Qashqai	2008-2020	EU	18050
Nissan	Quest	2004-2017	M45	18049
Nissan	Rogue	2010-2020	M45	18049
Nissan	Sentra	2000-2020	M45	18049
Nissan	Titan	2004-2015	M45	18049
Nissan	Titan	2017-2020	M45	18049
Nissan	Titan XD	2016-2019	M45	18049
Nissan	Xterra	2005-2015	M45	18049
Nissan	X-Trail	2001-2013	M45	18049
Nissan	X-Trail	2014-2017	EU	18050
Opel	All models	All years	EU	18050
Peugeot	All models	All years	EU	18050
Porsche	All models	All years	EU	18050
Renault	Most models	All years	EU	18050
Renault	Kadjar	2015-2020	M45	18049
Renault	Koleos	2007-2020	M45	18049
Saab	All models	All years	EU	18050
SEAT	All models	All years	EU	18050
Skoda	All models	All years	EU	18050
Subaru	Ascent	2019-2020	M45	18049
Subaru	BRZ	2013-2020	M45	18049
Subaru	Crosstrek	2013-2019	M45	18049
Subaru	Forester	1998-2020	M45	18049
Subaru	Impreza	1993-1997	M79.5	18048
Subaru	Impreza	1998-2020	M45	18049
Subaru	Legacy	1991-1998	M79.5	18048
Subaru	Legacy	1999-2020	M45	18049
Subaru	Outback	2005-2020	M45	18049
Subaru	STI	2003-2020	M45	18049
Subaru	SVX	1992-1997	M79.5	18048
Subaru	Tribeca	2006-2014	M45	18049
Subaru	WRX	2002-2020	M45	18049
Vauxhall	All models	All years	EU	18050
Volkswagen	All models	All years	EU	18050
Volvo	Most models	All years	EU	18050
Volvo	S40	2000-2004	M79.5	18050
Volvo	V40	2000-2004	M79.5	18048

4PC. Master Cylinder Adapter Set

WARRANTY

You are backed by the ARES Tool Performance Assurance!

ARES TOOL warrants this product (excluding carrying cases and storage accessories and the product categories set forth below) to the original purchaser for its useful life (not to exceed one year for products with electrical or electronic components) against defects and deficiencies in material and workmanship.

This **LIMITED LIFETIME WARRANTY** does not cover products which in ARES Tool's judgement have been subject to negligence, misuse, abuse, accident, improper storage, alteration, improper repair, disassembly and/or reassembly. Normal wear and tear are also excluded. Deficient products will be replaced or repaired.

Please call or email at (206) 453-6776 / ares@arestool.com for more details or to receive support.

This warranty excludes blades, bits, bit sockets, carrying cases, pouches, torque products, punches, dies, bulbs, fuses, batteries, and other consumables which must be replaced under normal use and service. These warranties set forth herein are the sole warranties applicable to Products and is in lieu of all other warranties, whether expressed, implied or statutory.

The implied warranties of merchantability and fitness for a particular purpose are specifically excluded. Customer's sole and exclusive remedy for breach of this Warranty is, at the option of **ARES TOOL**, repair or replacement of the defective product.

Please visit us at WWW.ARESTOOL.COM to register your product and sign up for our ARES Tool Club

B6 MADE IN TAIWAN
HECHO EN TAIWAN
FABRIQUÉ À TAIWAN



WARNING:
Cancer and Reproductive Harm-
www.p65Warnings.ca.gov



**ALWAYS WEAR EYE
PROTECTION THAT COMPLIES
WITH ANSI STANDARD**

PERFORMANCE ASSURANCE
LIMITED Lifetime Warranty

PLEASE RECYCLE



POR FAVOR RECICLE
VEUILLEZ RECYCLER